



**ITDOSE Infosystems Pvt. Ltd.**

*Innopath*<sup>TM</sup>



## About ITDOSE

ITDOSE INFOSYSTEMS PVT. LTD. is a novel vision of young and enthusiastic entrepreneur dedicated at developing and delivering innovative and apt business solutions.

IISPL invests extensively in R&D to conceive new solutions for the ever changing needs of business, making them technically advance, sustainable and consistent. We work in close collaboration with the hospitals and diagnostic centers across the world to design implement and support the latest IT-based solutions, progressive and affordable. Our services continue to earn trust and loyalty from clients through our commitment and the following parameters:

- On-time Delivery
- Superior Quality
- Excellent Customer Support
- Cost Effectiveness

### Our Vision

To develop and deliver innovative solutions by transforming creative ideas into next generation cutting edge technologies through consistent R&D and well planned implementation methodology to organize healthcare sector globally.

### Our Mission

To stay at the frontier technology, identify the changes and potential in the fast growing healthcare IT industry and to serve it with innovative solutions.

### Our Values

- Customer First
- Dignity of individual
- Commitment to quality
- Honesty & Loyalty
- Pursuit of excellence
- Leadership by example

## Why ITDOSE?

- A core team of 100+ qualified software engineers
- Experience in executing more than 500 projects
- Innovation driven organization with global presence.
- Energetic and experienced team with process & technical expertise.
- Well defined online support system.
- Track record of finishing projects within the time line



DigiClinic™

itDRIMS™

Hospedia™

An Innovative Approach to Manage Pathology Business



Today's laboratories are privileged to be able to take advantage of the latest LIMS (Laboratory Information Management Solution) to operate with the highest level of efficiency, effectiveness, and quality. The real challenge is to find the right solution that meets both your immediate requirements and future needs. As your business grows, your operation must be continually supported without having to "build in" your new process needs, by painfully applying ad hoc systems or hiring costly external consultants who may not fully understand your business, operation, and legacy systems.



A dominant provider of laboratory informatics, ITDOSE Innopath has successfully developed and delivered LIMS solution worldwide. Our informatics solutions are tailored to manage your organization's critical information across multiple laboratory facilities in order to optimize productivity and share knowledge more effectively. We deliver configurable-off-the-shelf solutions for a variety of functional laboratories focused on research, development, quality management, bio-banking and environmental monitoring – just to name a few.

ITDOSE Innopath continues to redefine enterprise laboratory informatics with its leading combination of functionality, flexibility, and technology in one platform. We help organizations model their business-specific workflows, seamlessly integrate with instruments and business applications and meet government regulations to increase productivity, reduce operating costs, and improve overall quality. With Innopath, your enterprise-wide information management is accomplished with

- Intuitive data entry from any Internet or Intranet access device and easy integration to 3rd party instruments and systems,
- Workflow and process automation through a simple user interface, and
- Compliance with internal standards and government regulations through programmable rules and electronic signature.

ITDOSE Innopath is committed to supporting your informatics needs both today and into the future. With flexible and easy-to-use configuration tools, our solutions can be quickly tailored to specific roles within the enterprise, adapted to changing business needs, and extended to other areas of the organization, while also reducing ongoing validation costs. ITDOSE Innopath is an innovative and advanced web based LIS / RIS which provides the cutting edge on stop IT solution to the Diagnostic and Pathology lab chains. ITDOSE Innopath is can combine all the branches and collection centers and partner networks into a centralized platform to facilitate smooth functioning of the operations.

Because we believe that Good Service is a Good Business...

Advantages of INNOPATH (Supporting Images or diagram required)

- It's Robust – Compatible with multiple browsers & Gadgets
- It's Intelligent – In-built Business Intelligence tools that give instant and accurate results.
- It's Better – Optimizes Operations effectively & efficiently.
- It's Reliable – Streamlines Financial & Clinical Operations.
- It's Fast – Supports web technologies for immediate responses and quicker outcomes

The logo for mobiDose, featuring the word "mobiDose" in a white, lowercase, sans-serif font with a small cross symbol above the 'i'.The logo for e-LABpro, featuring the word "e-LABpro" in a white, lowercase, serif font.

**An Innovative Approach to Manage Pathology Business**

# Product Features



**Multi-User & Multi-Site Compatibility**  
 Innopath is scalable and compatible to any hierarchal structure and compatible devices to offer user comfort

**Browser Independent (IE/Mozilla/Chrome)**  
 Innopath can be accessed in any platform i.e. internet explorer, Mozilla, chrome etc.



**Multi-User & Multi-Site Compatibility**  
 Innopath is scalable and compatible to any hierarchal structure and compatible devices to offer user comfort

**Appointment Management & Home Collection Facility**  
 Innopath offers online appointment and home collection facility in a one click from your mobile devices.



**Comprehensive User Security**  
 Innopath gives complete secure environment for application and database without administering additional cost.

**Billing and Insurance**  
 Innopath provides an option to scan and upload the documents for future references and clinical co-relation.



**Scanning & Uploading of Documents**  
 Innopath offers organized commercial workflow by creating panel / client wise billing and separate rate list creation with support reports and dashboard for the analysis.

## Barcode Management

Innopath given an option to configure center-wise pre-printed and real time barcodes based Lab's requirement.



**Sample Tracking Mechanism**  
 Innopath helps to track the status of in-house and out source sample in just one click.

## Sample Logistics Management

Tracking of sample logistics is not a cumbersome task now by introducing Innopath into your daily process.



**Automated SMS**  
 Auto generated SMS is one of the third party communication facility integrated with Innopath. Now you can address your team and patients at every checkpoint.

## Critical & Abnormal Value Alerts

Innopath provides event based alerts to each user of the application, thereby maintaining priority based focus.



**Email Management**  
 Auto email is one of the third party integrated tool with Innopath, which always fills the communication gap between laboratories and patients.

## Data Structure

Innopath gives a facility in data structure to mark age and gender wise normal, abnormal & critical values.



**Result Value Units**  
 Innopath provides platform to mark the result values in normal and SI Units

## Our Certificates & Awards



An Innovative Approach to Manage Pathology Business

**Visit ID** : MITD6434 Registration : 22/Dec/2022 04:12PM  
 UHID/MR No : AITD.0000006426 Collected : 22/Dec/2022 04:13PM  
**Patient Name** : Mr.ABHI SHAK Received : 22/Dec/2022 04:14PM  
 Age/Gender : 34 Y O M O D /M Reported : 22/Dec/2022 04:16PM  
 Ref Doctor : Dr.SELF Status : Final Report  
 Client Name : BIOCITY HEALTH CARE Client Code : 78  
 Client Add : DELHI Barcode No : 10065968



DEPARTMENT OF BIOCHEMISTRY

Test Name	Result	Unit	Bio. Ref. Range	Method
<b>LIVER FUNCTION TEST</b>				
<b>Sample Type : SERUM</b>				
TOTAL BILIRUBIN	1	mg/dl	0.1-1.2	Diazotized, Sulfanilic
CONJUGATED ( D. Bilirubin)	1	mg/dl	0.00-0.30	Jendrassik & Groff
SGOT	8	U/L	8.0-35.0	Enzymatic,IFFC
S.G.P.T	30	U/L	10.0-35.0	Enzymatic,IFFC
ALKALINE PHOSPHATASE	33	U/l	30-120	
TOTAL PROTEINS	7	gm/dl	6.40-8.30	Biuret
ALBUMIN	4	gm/dl	3.5-5.0	BCG
GLOBULIN	3	gm/dl	2.0-4.1	Calculated
A/G RATIO	1.33		1.0-2.0	Calculated
GGT	9	U/L	8.0-55.0	Colorimetric Method


**Comments and Interpretation:**


The liver filters and processes blood as it circulates through the body. It metabolizes nutrients, detoxifies harmful substances, makes blood clotting proteins, and performs many other vital functions. The cells in the liver contain proteins called enzymes that drive these chemical reactions. When liver cells are damaged or destroyed, the enzymes in the cells leak out into the blood, where they can be measured by blood tests Liver tests check the blood for two main liver enzymes.


- **Aspartate aminotransferase (AST),SGOT:** The AST enzyme is also found in muscles and many other tissues besides the liver.
- **Alanine aminotransferase (ALT), SGPT:** ALT is almost exclusively found in the liver. If ALT and AST are found together in elevated amounts in the blood, liver damage is most likely present.
- **Alkaline Phosphatase and GGT:** Another of the liver's key functions is the production of bile, which helps digest fat. Bile flows through the liver in a system of small tubes (ducts), and is eventually stored in the gallbladder, under the liver. When bile flow is slow or blocked, blood levels of certain liver enzymes rise: Alkaline phosphatase Gamma-utanyl transpeptidase (GGT) Liver tests may check for any or all of these enzymes in the blood. Alkaline phosphatase is by far the most commonly tested of the three. If alkaline phosphatase and GGT are elevated, a problem with bile flow is most likely present. Bile flow problems can be due to a problem in the liver, the gallbladder, or the tubes connecting them.  
Proteins are important building blocks of all cells and tissues. Proteins are necessary for your body's growth, development, and health. Blood contains two classes of protein, albumin and globulin. Albumin proteins keep fluid from leaking out of blood vessels. Globulin proteins play an important role in your immune system.
- **Low total protein may indicate:** 1.bleeding 2.liver disorder 3.malnutrition 4.agammaglobulinemia
- **High Protein levels 'Hyperproteinemia:** May be seen in dehydration due to inadequate water intake or to excessive water loss (eg, severe vomiting, diarrhea, Addison's disease and diabetic acidosis) or as a result of increased production of proteins
- **Low albumin levels may be caused by:** 1.A poor diet (malnutrition). 2.Kidney disease. 3.Liver disease.
- **High albumin levels may be caused by:** Severe dehydration.

\*\*\* End Of Report \*\*\*



  
 Verified By  
 Dr. Jyoti

  
 Dr. Nirav navinchandra Arora  
 (MD/ MPH ) PATH

  
 Dr. Vivek Kapoor  
 MBBS , DCP (Path)  
 (Consultant Pathologist)



**Specific Placeholders**

Innopath gives the facility of specific placeholders to put interpretation, comments and methods.



**Invoicing**

Auto generated invoicing and settlement feature for credit clients and franchise.



**Specialized Workflow**

Innopath manages the specialized workflow of Histo, Cyto & Microbiology Departments.



**Hierarchical system**

Innopath supports role and right based hierarchical system and provide ease of access and centralized control of the entire laboratory operations.

**TAT Analysis**

Innopath gives an option to calculate center wise and logistic TAT, TAT delay, Delay reason etc. to increase the efficiency of the lab.



**Performance Trackers**

Innopath enables the laboratories to check and compare the performance of the users on day to day basis.



**Comparative Values**

Innopath enables users to compare the values if and when required such as—Instrument comparison, Analysis Measurement Range, Delta Check, Re-Run, Critical & Abnormal values.



**Mobile Application**

Separate integrated mobile application for patients, doctors and phlebotomist to have the accessibility and status on finger tips.

**Quality Control**

Innopath enables quality control reports to check, measure and enhance the quality of sample processing based on the international guidelines.



**Loyalty and membership Card**

Laboratories can create individual and family loyalty/membership cards in order to give lucrative offers to the customers.



**Prevent Leakage**

Innopath inventory module helps automate purchase through predictive ordering, expiration alert and manages and controls the reagents to its optimal use.



**Digital Signature**

Innopath offers easy report approval mechanism with digital signature of the doctors.

**Audit Trails**

Innopath supports compliance by producing an audit trail of any sample, log reports of clinical and financial transactions.



**Integrations**

Easy integration of third party application in order to streamline the process and reduce manual interventions.



**Lock-Unlocking Facility**

Innopath offers facility to create multiple pre & Post paid franchises with locking and un-locking facility.



**Dash Board**

Interactive dash board feature is just a click away to view and analyze the clinical and financial transactions.

**Software Compliances**



Innopath meets the extracting standards & requirements of lab certification Agencies globally.

**Standards**



Innopath is fully compliant software to Indian and International Standards for Labs and Hospitals

**An Innovative Approach to Manage Pathology Business**

Automate your front office & Manage all workflows with automated communications, configurable forms, online payments and keep your patient details in one place

Front Office Management



Specializes in automated responses right from ordering test and group of tests on an individual or sample, typically receiving and accession number logging to documenting the demographics and receipt of the specimen.

Sample Accession Management



Manage phlebotomy area with barcoded process and specimen status from pricks, types of sample, colors of tubes for sample collection and rejection. Also tracking of the sample status like collected / not collected / rejected with reasons.

Phlebotomy & Sample Tracking



Auto generated sample labels based on sample types and codes. Automation of the process enables faster operation with reduce expenditure.

Sample Processing & Automation



Automated and manual validation process with formula based reporting mechanism and indicators of normal, abnormal and critical ranges.

Result Validation & Authorization



Barcoded report dispatch system and predetermination of setting report dispatch mode improves the dispatch process and minimizes the report dispatch time.

Dispatch Management



Predetermination of outsourced investigation makes sample transfer process easier to the outsources labs and enables the tracking mechanism.

Sample Outsource Management



Specialized workflow modules for Histopathology, Cytology and Microbiology departments with reduced paperwork with 100% throughput in time.

Specialized Work Management



Automate your front office & Manage all Sample storage module captures the information of shelf life and storage location of each sample type with the expiry and discard procedure.

Sample Storage Management



Optimizes the scheduling and tracking of home sample collection and pickup by establishing the automated communication with the patients & phlebotomists.

Home Collection Management



Facility of online and telephonic appointments for Radiology investigations and consultation.

Appointment Management



Our USP

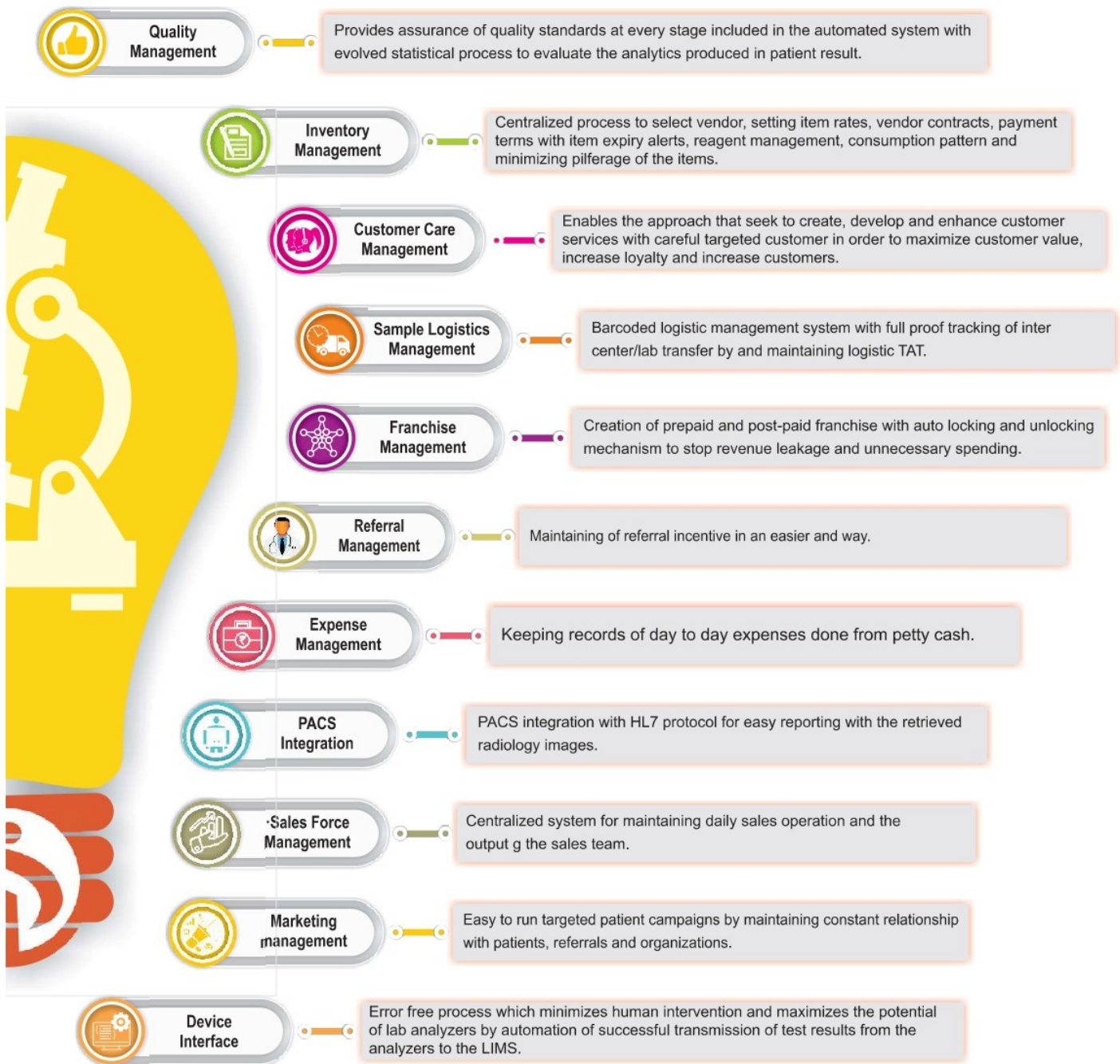
500+ Smiling Clients

99+ Customer retention

300+ Software Replacement

An Innovative Approach to Manage Pathology Business





## OUR Strength

100+  
Team of  
Engineers

10+  
Presence in  
Countries

10+  
Years of  
Industry  
Experience

An Innovative Approach to Manage Pathology Business





**Innopath**™

## ITDOSE Infosystems Pvt. Ltd.

Corporate Address:

D-159, Sector-7, Noida-201301(UP) INDIA

Mail us at:

[info@itdoseinfo.com](mailto:info@itdoseinfo.com)

**+91 120 411 5455**

Contact us for Help



### Branch Offices:

Lucknow Office

11/32, Sanjay Vihar Colony, Vikas Nagar,  
Lucknow-226022 (U.P.) +91 74080 80361

Kolkata Office

14-B Damdam Road, RBI Staff Quarters,  
Bir Para, Paikpara, Kolkata-700030 (WB)  
+ 91 99999 16974

Hyderabad Office

Flat No. 304, 6-3-1177/A/21, Hussain Nagar  
Colony, Begumpet, Hyderabad-500016  
(Telangana) +91 79806 54137

Tamilnadu Office

AES TECHNOLOGIES INDIA Pvt. Ltd.  
#5030, Second Floor Sreevatsa Center,  
G N Mills Post, Mettupalayam Road,  
Coimbatore-641 029 (TN) 0422 4229100-98